



**PERFORMANCE
WORLD**

02.29.24



**NEW PRODUCT SUPPLEMENT
FOR THE 2024 CATALOG**



NEW PRODUCTS

2024 Catalog Changes, Corrections & Addendums

Page 41 & 42 - 650321/650321EFI RPM range should read 2,500-7,000 RPM

Page 42 - 650321EFI height should read 4.95" front/4.95" rear. Now also includes fuel rail kit!

Page 166 - All V-Band replacement clamps come with T-bolt & nut too

Page 200 - The 846500 does not fit PW9 axles as stated without modification. (Rotor register needs to be opened to 2.80")

Page 292 - The reference "See page 251" should read "See page 277"

LS VALVE COVER COIL BRACKET BOLTS

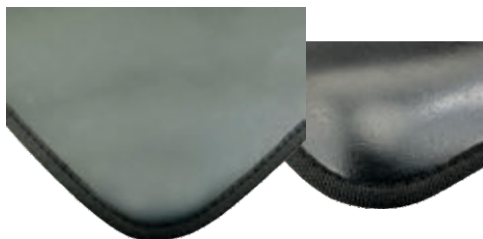
- Button head stainless steel
- Perfect dress-up replacement for OE bolts
- Fits our 366143/BK & other valve covers
- Includes stainless steel washers



IN STOCK!

Coil Mount Bolts		SET
Part Number	APPLICATION	QTY.
366130	LS2/3/4/7/9	16

HEAVY DUTY FENDER COVERS



- 35" x 25"
- Heavy duty - 4mm thick
- Fully stitched seam edge
- PVC foam backed to protect paint



IN STOCK!

PW Fender Cover		COLOR
Part Number		
790000		Black

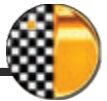
LS/LT ROCKER ARM TRUNNION UPGRADE

- A must with higher lift cams and increased spring pressures
- High quality 52100 bearing steel trunnions
- Bronze bushings for ultimate reliability

ETA 2024



Trunnion Upgrade		SET
Part Number	APPLICATION	QTY.
369000	Gen III/IV LS & Gen V LT Engines	16



HOUSING & AXLE PACKAGES



ETA JUL 2024

- Bolt-in ready or universal 9" housings
- Heavy duty "Notch Back" centers
- Set up for Ford 9" "Late Torino" style brakes
- 31 spline large bearing axles (5x4-1/2" & 5x4-3/4" bolt pattern)
- Black powdercoated finish (Exc. universal)
- Killer price!



PW9 Components Part Number	FITS VEHICLE	AXLE FLANGE OA WIDTH	NOTES
846700-58	Universal (Raw)	58"	No Mounts
846700-60	Universal (Raw)	60"	No Mounts
846755	1955-1957 Chevy	57"	Leaf Spring
846759	1959-1964 Chevy	60"	Coil Spring
846767	1967-1969 GM F-Body	60-1/4"	Multi-Leaf
846768A	1968-1972 GM A-Body	61-1/4"	Coil Spring
846768X	1968-1972 GM X-Body	60-1/4"	Multi-Leaf
846770	1970-1981 GM F-Body	61-1/4"	Multi-Leaf
846778	1978-1987 GM G-Body	58"	Coil Spring



READY TO INSTALL 9-INCH THIRD MEMBERS



ETA JUL 2024

- Bolt in ready 9" third members
- Nodular iron 3.062" case
- Big bearing "Daytona" pinion support
- Traction Lock 31 spline posi
- Billet yoke for 1350 u-joint
- Motive Gear™ gears & bearings



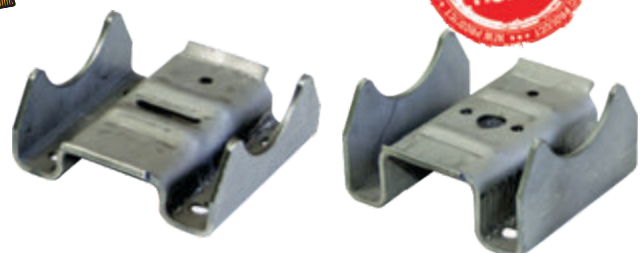
PW9 Components Part Number	GEAR RATIO	AXLE SPLINE	POSI STYLE
846835	3.50:1	31-Spline	Traction Lock
846837	3.70:1	31-Spline	Traction Lock
846839	3.89:1	31-Spline	Traction Lock
846841	4.11:1	31-Spline	Traction Lock

GM F-BODY SPRING PERCHES



ETA JUL 2024

PW9 Components Part Number	FITS VEHICLE	LEAF SPRING	PKG. QTY.
846201	GM F-Body/X-Body	Mono	2
846202	GM F-Body/X-Body	Multi	2





NEW PRODUCTS

5 POINT SFI 16.1 LATCH-LINK HARNESS

- Patented light weight latch - weighs 42% less than others!
- SFI 16.1- Always fresh dates!
- Black epoxy adjusters & hardware
- 3" lap & shoulder, 2" submarine belt
- Individual shoulder harnesses
- Pull down style with release straps
- Bolt-in lap, shoulder & submarine
- Racing use only

ETA MAY 2024



Patented Lightweight Latch Mechanism



I.D. Tagged

Black Epoxy Hardware



Latch-Link Harness		
Part Number	STYLE	COLOR
270600	3" 5-Point Latch-Link	Black
270620	3" 5-Point Latch-Link	Red
270660	3" 5-Point Latch-Link	Blue

FORD 9 INCH STORAGE CASES



- Perfect for storage, shipping or at the track!
- Fits all standard case Ford 9" third members
- Heavy duty ABS

ETA JUL 2024



PW9 Components	FITS		
Part Number	DIFF	MATERIAL	QTY.
846002	Ford 9"	ABS	1

LS CYLINDER HEAD DOWELS

- A "must have" when replacing your heads
- OE replacement
- 4/pk

IN STOCK!

LS Dowels	FITS		
Part Number	ENGINES	SIZE	PKG. QTY.
360250	All LS	.640"x.587"	4





RUBBER/ALUMINUM THERMOSTAT GASKET

ETA MAY 2024

- Reusable & durable
- Rubber over aluminum
- Fits all SB & BB Chevrolet and '79-'92 SBM & '92-'03 Magnum

Thermostat Gasket Part Number	FITS ENGINES	PKG. QTY.
120000	SB/BBC & Mopar	1



ALUMINUM LS & LT VALVE COVERS

IN STOCK!

- Polished or Black
- Billet thread-on oil cap
- Hardware & o-ring gaskets included

Valve Covers Part Number	APPLICATION	OVERALL HEIGHT
366136	LS Chevrolet Polished V/C w/Coil Covers	4.25"
366136BK	LS Chevrolet Black V/C w/Coil Covers	4.25"
366144	LT Chevrolet Polished V/C w/Coil Mounts	1.75"
366144BK	LT Chevrolet Black V/C w/Coil Mounts	1.75"



LS HARD LINE STEAM VENT KIT

- To fit most factory and aftermarket intakes
- Stainless lines with 4AN fittings
- Includes PTFE tape & hardware

IN STOCK!

LS Steam Vent Kit Part Number	FITS	AN SIZE	STYLE	PKG. QTY.
82003	LS Engines	4AN	4 Port Hard Line	Kit



LS AIR CONDITIONING FITTINGS

- Fits Denso 10S17F & 10S20F compressors
- Adapts to AN style fittings

IN STOCK!

A/C Fittings Part Number	FITS	AN SIZE	PKG. QTY.
600200	Denso 10S17F & 10S20F	8AN/10AN	Set/2





NEW PRODUCTS

AIRFLOW™ DUAL PLANE ALUMINUM INTAKE MANIFOLDS

- Fits rectangle port LS3
- 1,500-6,500 RPM



ETA MAY 2024

LS3 CARBURETED



650023
Height = 5.10" front/6.15" rear

Intake Manifolds				
Part Number	FITS	HEIGHT FR / RR	RPM RANGE	FINISH
650023	LS Chevrolet (LS3)	5.1"/6.15"	1,500-6,500	Satin

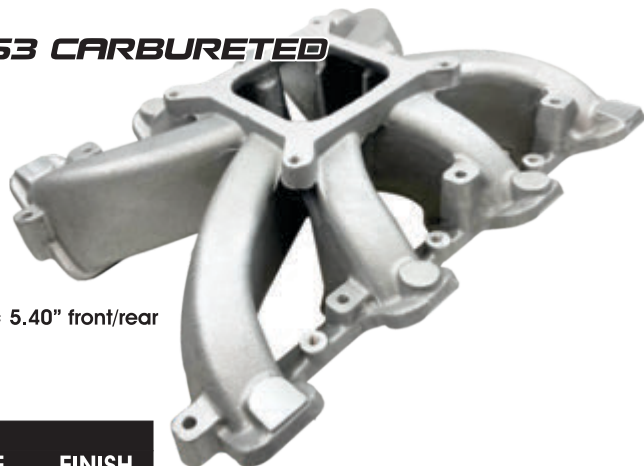
SINGLE PLANE ALUMINUM INTAKE MANIFOLDS

- Fits rectangle port LS3
- 2,500-7,000+ RPM
- Single plane design



ETA MAY 2024

LS3 CARBURETED



650323
Height = 5.40" front/rear

Intake Manifolds				
Part Number	FITS	STYLE	RPM RANGE	FINISH
650323	LS Chevrolet (LS3)	S/P Carb	2,500-7,000	Satin

SINGLE PLANE EFI INTAKE MANIFOLDS

- Fits rectangle port LS3
- 2,500-7,000+ RPM
- Use with our 646700 1,000cfm throttle body
- Fuel rail kit included!



ETA MAY 2024

LS3 EFI



650323EFI
Height = 5.40" front/rear

Intake Manifolds				
Part Number	FITS	STYLE	RPM RANGE	FINISH
650323EFI	LS Chevrolet (LS3)	S/P EFI	2,500-7,000	Satin



LS VALVE COVER FITTINGS

- Fits LS Chevrolet valve covers & All 3/4" PCV grommets
- Easily plumb oil catch cans & separators
- 8AN or 10AN

ETA MAY 2024



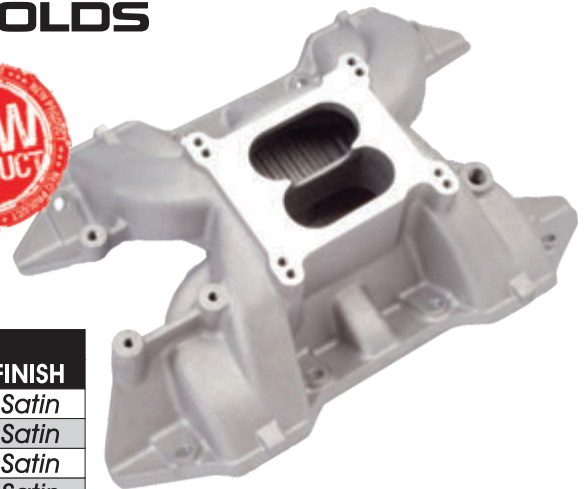
Shown with 4998

V/C Fittings			
Part Number	FITS	AN SIZE	PKG. QTY.
82008	LS & 3/4" PCV Grommets	8AN	1
82009	LS & 3/4" PCV Grommets	10AN	1

DUAL PLANE INTAKE MANIFOLDS

- More applications!
- Dual plane street engine design
- Great quality and value priced!

ETA MAY 2024



Intake Manifolds				
Part Number	FITS	HEIGHT FR / RR	RPM RANGE	FINISH
650004	Ford 351M/400	TBD	Idle-5,500	Satin
650005	Ford 429/460	TBD	Idle-5,500	Satin
650009	BB Mopar 383/400	TBD	1,500-6,500	Satin
650010	BB Mopar 413/440	TBD	1,500-6,500	Satin

BLACK DUAL PLANE ALUMINUM INTAKE MANIFOLDS

- Flat black finish
- Street or strip!
- 650100BK Airflow™ design allows for cooler intake charge = more power!
- Great quality and value priced!

IN STOCK!



Intake Manifolds				
Part Number	FITS	HEIGHT FR / RR	RPM RANGE	FINISH
650000BK	SB Chevrolet '55-'95'	4.13"/5.38"	1,500-6,800	Black
650100BK	SB Chevrolet '55-'95'	4.38"/5.25"	1,500-6,800	Black

*Includes adapters for '87-'95 applications

BRAIDED STEEL THROTTLE CABLES

- Cut to length
- Universal carbureted applications

ETA MAY 2024



Throttle Cables		
Part Number	FITS	LENGTH
6054	Universal Carbureted	24"
6054X	Universal Carbureted	36"



NEW PRODUCTS

HIGH PERFORMANCE FUEL PUMPS

- Carbureted - gasoline
- 80GPH fuel flow
- 8psi shut-off
- 1/4"NPTF inlet/outlet
- Does not require a regulator
- Chrome plated

ETA MAY 2024



Mechanical Fuel Pumps		FUEL FLOW	FINISH
Part Number	APPLICATION		
643303	Ford 351C	80GPH	Chrome
643304	Ford 429-460	80GPH	Chrome
643305	Ford FE 390-428	80GPH	Chrome
643306	SB Mopar 273-360	80GPH	Chrome
643308	Pontiac 350-455	80GPH	Chrome
643309	Oldsmobile 330-455	80GPH	Chrome
643310	BB Mopar 383-440	80GPH	Chrome



RUBBER V/C GASKETS W/STEEL LINERS

- Reusable
- Won't distort or tear!
- Perfect seal every time!
- Sold in pairs



ETA MAY 2024

Valve Cover Gaskets			PKG. QTY.
Part Number	APPLICATION	THICKNESS	
366400	SB Chevrolet '55-'86	3/16"	2
366401	BB Chevrolet 396-454	3/16"	2
366402	SB Ford 289-351W	3/16"	2
366403	Ford 351C/351M/400	3/16"	2
366404	Ford 429/460	3/16"	2
366405	Ford FE 360-428	3/16"	2
366406	SB Mopar 273-360	3/16"	2
366408	Pontiac 350-455	3/16"	2
366409	Oldsmobile 330-455	3/16"	2
366410	BB Mopar 383-440	3/16"	2

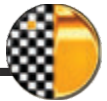
FORGED BILLET WHEEL ADAPTERS

- Manufactured from rugged, lightweight 6061-T6 billet aluminum forgings
- Widen your vehicle's stance
- Adapt custom wheels
- Grade 12.9 metric studs (most applications)
- Includes acorn nuts
- Sold in pairs

ETA MAY 2024



6061-T6 P/N	THICKNESS	FITS VEHICLE	FITS WHEEL	ID/OD	STUD SIZE
512139	1.25"	5x5-1/2"	5x5-1/2"	108/176	1/2"-20
612359	1.25"	6x135mm	6x5-1/2"	87/176	1/2"-20
615395	1.50"	6x5-1/2"	6x135mm	108/176	M14x1.5



GM TRUCK 5-LUG REAR DISC BRAKE CONVERSION

IN STOCK!

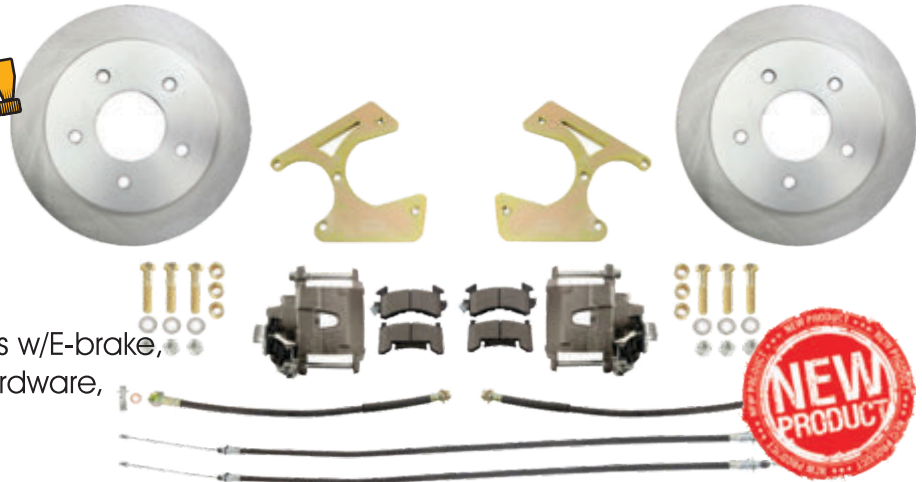
DBK1012TRK-5 (2.42" Offset)

'63-'70 Chevrolet C-10 PU 2WD

Complete kit includes:

12" rotors (5x5"), loaded calipers w/E-brake, caliper brackets, brake lines, hardware, spacers & e-brake cables.

Rotor register = 3.09"



BRAIDED HOSE CUTTING SHEARS

- 24"
- Clean cuts every time!
- Cuts 3AN to 16AN braided steel hose

ETA MAY 2024



Hose Shears	CUTS	
Part Number	HOSE	LENGTH
784150	3AN to 16AN	24"

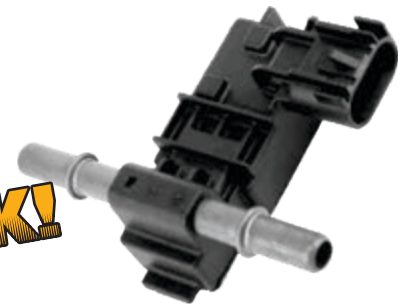
E85 FLEX FUEL SENSOR

- Genuine Continental (#SE1004S) OE part
- Use with our 649600 E85 sensor bypass
- Perfect OE replacement
- GM#13577429

E85 Sensor	
Part Number	APPLICATION
645260	OE GM or Universal ¹

¹ When used with PW#649600 mount

IN STOCK!



CHROME AIR CONDITIONING COMPRESSOR

- High quality - NEW - NOT REBUILT!
- Chrome plated
- R134 compatible
- Pre-oiled with PAG100 oil

ETA JUN 2024



A/C Compressor			
Part Number	STYLE	MODEL	DRIVE
8005	Sanden	SD-7	6 Groove



NEW PRODUCTS

TURBOCHARGER TURBINE DISCHARGE FLANGE



ETA MAY 2024



- Stainless steel
- Fits S475/480/488/492 & Borg Warner Marmon Style

V-Band Part Number	FITS	V-BAND FLANGE OD	DOWNPIPE SIZE	MATERIAL
427480	S475/480/488/492 & BW Turbos	5.75"	4.00"	S/S



PW PRO-SERIES 8MM SB CHEVROLET BARE ALUMINUM CYLINDER HEADS

PRO220

- 220cc Intake runners
- Angle plug design
- 2.08"/1.60" x 8mm valve sizes (PW #360042/#360047)
- 23° valve angle
- .750" thick deck
- .250" raised exhaust ports
- Manufactured from A356-T6 heat treated aluminum
- Multi-angle intake and exhaust valve grind
- Manganese bronze valve guides
- Sold bare ready for assembly
- All tech, specs & parts at www.performance-world.com



ETA MAR 2024

Heads Bare Part Number	FITS ENGINE	COMB CC	INTAKE CC	EXHAUST CC	VALVE SIZES	ROCKER MOUNT
65220	SBC 302-400	65cc	220cc	80cc	2.08/1.60	Stud

Note: PRO220 heads have extra large intake ports. Some smaller port intake manifolds will not cover the port. Check your intake manifold before purchasing.

PW PRO-SERIES 8MM SB CHEVROLET FULL CNC BARE ALUMINUM CYLINDER HEADS

- CNC ported 65220
- 2.10"/1.60" x 8mm valve size (not included)
- Full competition CNC ports and combustion chambers
- .250" raised exhaust ports



FULL CNC PRO220R



CNC Heads Bare Part Number	FITS ENGINE	COMB CC	INTAKE CC	EXHAUST CC	VALVE SIZES	ROCKER MOUNT
65220R	SBC 302-400	65cc	220cc	80cc	2.10/1.60	Stud

Note: PRO220R heads have extra large intake ports. Some smaller port intake manifolds will not cover the port. Check your intake manifold before purchasing.





SNAP-IN HARNESS MOUNT

- Allows for easy seat belt re & re
- Fits our Cam-Lock and Latch-Link harnesses
- SFI approved
- Black epoxy
- Racing use only

ETA MAY 2024



Snap-in Hardware	FITS	PKG.
Part Number	SIZE/STYLE	QTY.
270020	2"/3" Cam-Lock & Latch-Link	1

FORD 9-INCH DIFFERENTIAL COMPONENTS



- Cast with flange/slinger
- 28-spline 9" Ford pinion
- For 1310 Series U-joint



IN STOCK!



PW9 Components	DESCRIPTION	NOTES	SPECS	SIZES
Part Number				
846302	Cast Steel Yoke	Collar to Surface 2.41"	4"x28spl	1310 U-Joint

TURBOCHARGER OIL DRAIN FLANGE GASKETS

- Replacement gaskets
- Sold each



IN STOCK!

Turbo Oil Drain Gasket	FITS	BOLT SPACING
Part Number		
83230G	83230	38mm-41.4mm
83240G	83240	50mm-51mm



HYDRAULIC ROLLER LIFTERS

- High quality manufactured by Gaterman LLC
- Chrome alloy steel forged body for high strength
- Carburized and hardened alloy steel body
- Precision machined and heat treated internal components
- Check-ball metering for precise control and quiet operation
- 100% select-fit components for precise leakdown rate
- 100% flow checked billet steel pushrod socket for precise oil metering
- Hardened/tempered certified 52100 steel bearing assembly
- All popular applications
- Great price!



ETA MAY 2024



Hydraulic Roller Lifters	APPLICATION	SOLD AS
Part Number		
361008	Pontiac/Oldsmobile Retro-Fit	Set/16

Manufactured by...
Gaterman Products LLC



NEW PRODUCTS

GROMMET SEALS

- Fire resistant rubber seal
- Anodized aluminum bezel
- Tightly grips hose or wiring
- Blanks can be punched easily with our 786100 kit
- Less expensive than bulkheads
- Withstands temps from -40°F to 300°F

ETA MAY 2024

Grommet Seals Part Number	FLANGE OD	HOLE ID	RUBBER DIAMETER	PKG. QTY.
321715	1.50"	Blank	1.00"	1
321720	2.00"	Blank	1.55"	1
321730	3.00"	Blank	2.25"	1
321736	3.00"	.375" (6AN)	2.25"	1
321738	3.00"	.500" (8AN)	2.25"	1
321740	3.00"	.625" (10AN)	2.25"	1
321742	3.00"	.750" (12AN)	2.25"	1
321750	3.00"	Blank (Split)	2.25"	1



321715/321720/321730



321750

GROMMET SEAL PUNCH KIT

- Punch out rubber grommets easily
- Use with 321715, 321720 & 321730 grommets
- 3/16", 1/4", 5/16", 3/8", 1/2"
5/8", 25/32", 1" and 1-1/4" punch dies
(5, 6, 8, 9, 12.5, 16, 20, 25, 32mm)

ETA MAY 2024

Grommet Punch Kit Part Number	PUNCH SIZES	PKG. QTY.
786100	3/16" to 1-1/4"	Kit



LS T/B BRACKET FOR TH700R4 2024

LS AFM/DOD BLOCK-OFF PLATE 2024

NOSTALGIA VALVE COVERS TBD

NOSTALGIA AIR CLEANERS TBD

MORE COMING SOON!



MORE COMING SOON!

**POWER.
STARTS.
HERE.**

WWW.PERFORMANCE-WORLD.COM