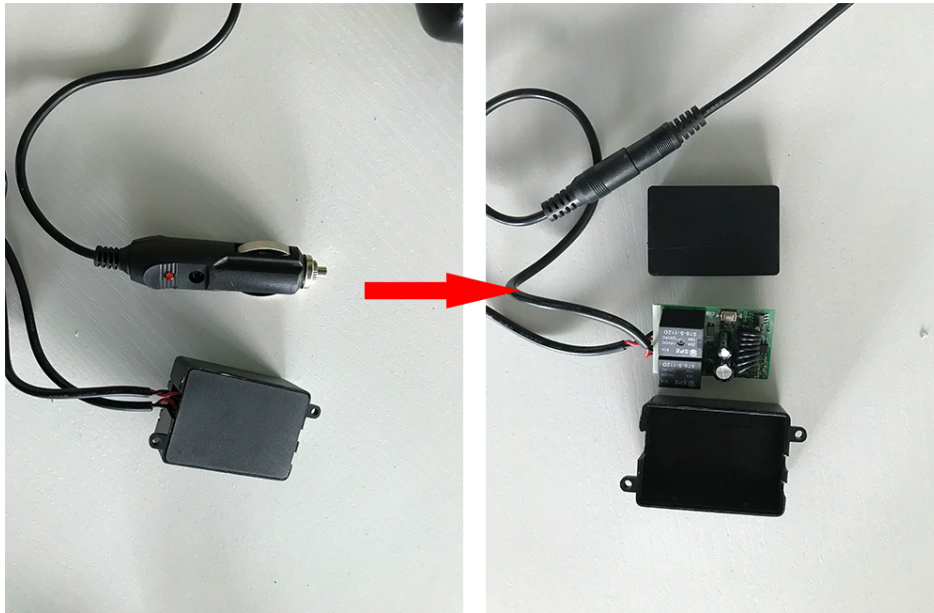
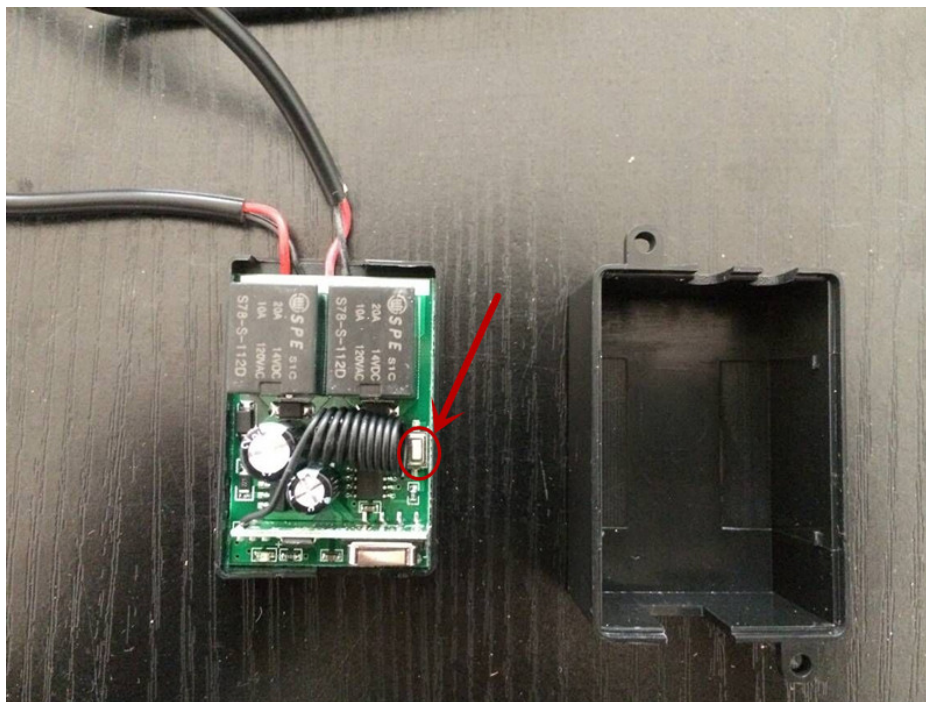


**This applies to all new remote controls and control boxes with XR LOGO.
Want to use two remote controls to control the same box?**

First open the control box



2) Then press the white button. (Unlike the previous, the new control box does not require the button to be held.)



3) Next press the “Open” button on the remote control to complete the connection between the remote and control box.

4) If the original remote does not work, repeat the procedure on it as well.